

Performance Management

EMPOWER MANAGERS AND INCREASE RETENTION



Elevate your staff and faculty's effectiveness and increase engagement on your campus with Performance Management, an easy-to-use module that automates the technical aspects of employee development.

Real-time visual dashboards give HR visibility at every step of the way. Analytics tools such as the nine-box model enable data-driven talent management decisions. And flexible configurations adapt to your institution's unique workflow, and individual departments' specific needs.

Drive your institutional mission forward through effective human capital management.



Streamline and Centralized

Stop tracking down feedback scattered in emails and forms. **With all review processes in one place, HR has more insight and oversight, while managers have clarity into deadlines and the feedback required.** A centralized platform means consistency across campus, and the simple, easy process means reviews are completed on time.



Seamless Integration

Designed to work seamlessly with Position Management, this module allows you to **directly link employees' position descriptions and performance reviews.** Ensure that managers are evaluating their employees based on criteria that match up with the job they were hired for. Keep employees on a growth trajectory by ensuring valuable and actionable feedback.



Customizable and Flexible

Tailor performance management to your campus with **custom evaluation rubrics and forms and cascading goals and objectives.** Position-specific reviews make it easy to meet the different requirements for faculty and staff. Schedule an annual review cadence or more frequent check-ins to fit your needs.



Compliance and Insights

HR visibility and actionable metrics make compliance a breeze. Processes move faster to be completed in the right time frame and, in case of an audit, you'll have a record of every decision and it's justification. Catch DE&I discrepancies, like gender bias in reviews, while they can still be corrected.

Develop and retain top talent with a data-driven, customizable performance management system.

Visit www.PeopleAdmin.com or call 916-936-0735 to learn more.

PeopleAdmin's HigherEd Platform

A single system of intelligence connecting your entire campus with innovative solutions, the HigherEd Platform is built to help your institution succeed.

- Robust SaaS platform with out-of-box integrations that connect with systems already in use on your campus.
- Meaningful insights from powerful data analytics tools with visual dashboards.
- Automate and optimize complex, HigherEd specific tasks from hiring and onboarding to growth, retention, and faculty development.
- Power your institution's mission of impacting student outcomes.
- Flexible and customizable modules mean you can digitize every corner of campus.

Marketplace of Connectors

PeopleAdmin's Marketplace of Connectors integrate with the best talent recruitment and management systems serving the HigherEd community.

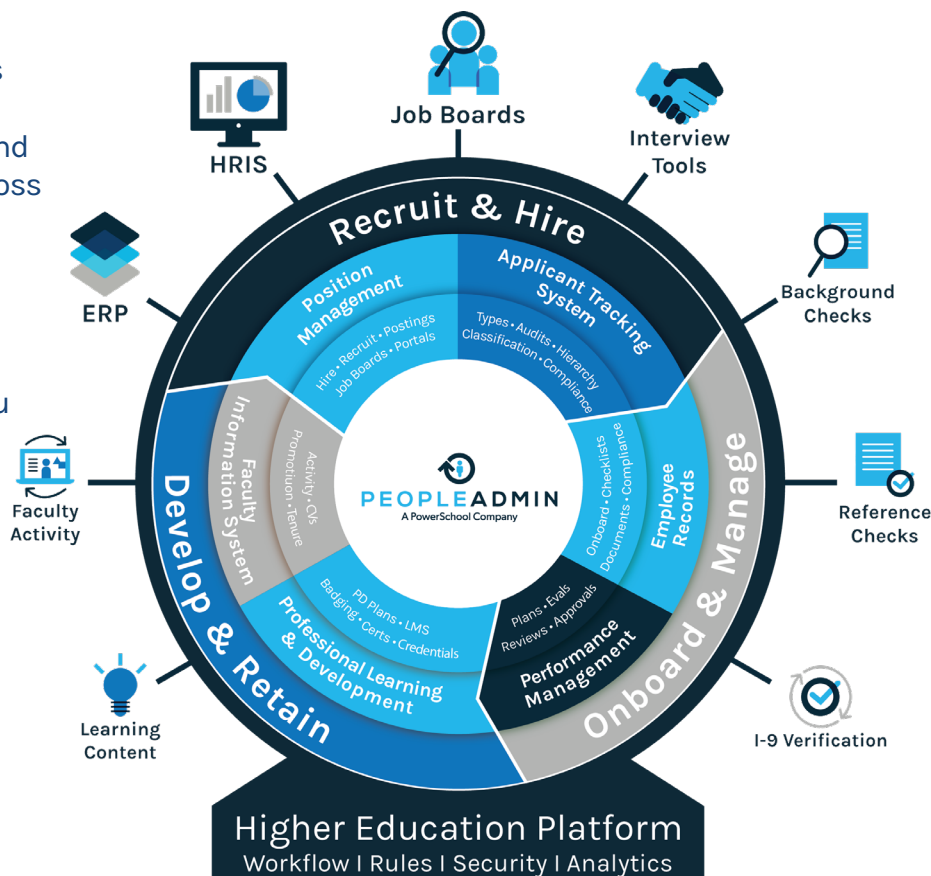
PeopleAdmin connects seamlessly with these partners so information flows between systems, **reducing manual re-entry, shoring up inconsistencies**, and providing a holistic view of analytics across the complete talent ecosystem.

Unified Insights

PeopleAdmin's Unified Insights arms you with the information you need to make better, data-driven decisions.

Interactive, visual dashboards provide near real-time visibility to help navigate EEO compliance, balanced hiring, budget planning, diversity initiatives, faculty and staff retention, and more.

Predictive analytics learn from past trends to help you anticipate and proactively plan for future outcomes to make smarter decisions, faster.



PEOPLEADMIN
A PowerSchool Company

Visit www.PeopleAdmin.com or call 916-936-0735 to learn more.